

vtech[®]

Instruction Manual

2-in-1 Ride & Balance Scooter



INTRODUCTION

Thank you for purchasing the **2-in-1 Ride & Balance Scooter!** Easily transforms from 3 wheeled trike to 2 wheeled balance bike. Interactive headlight and roller map get little ones moving by encouraging them to 'ride' to different destinations.

On/Off/Volume Switch

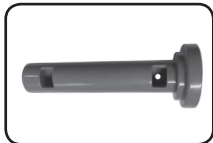
Twisting Headlight Ring

Rolling Map

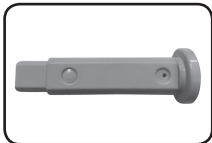
Light Up Buttons



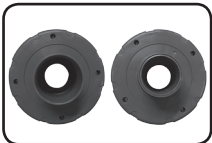
INCLUDED IN THE PACKAGE



Short Axle



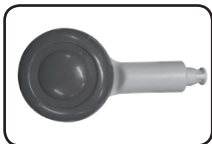
Long Axle



Two Back Wheels



Seat Back Handle



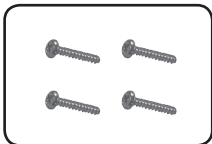
Front Wheel



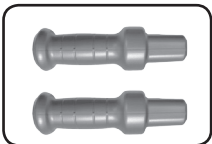
Front Wheel Cover



Driving Panel



Four Screws



Two Handlebars



Scooter Body



Driving Panel
Support Post



Label Sheet

- Quick Start Guide

WARNING

All packing materials such as tape, plastic sheets, packaging locks, removable tags, cable ties, cords and packaging screws are not part of this toy, and should be discarded for your child's safety.

NOTE

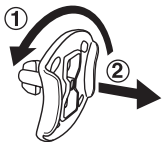
Please save this Instruction Manual as it contains important information.



CAUTION:

Adult assembly required. This package contains small parts. For your child's safety, do not let your child play with the toy until it is fully assembled.

Unlock the Packaging Locks



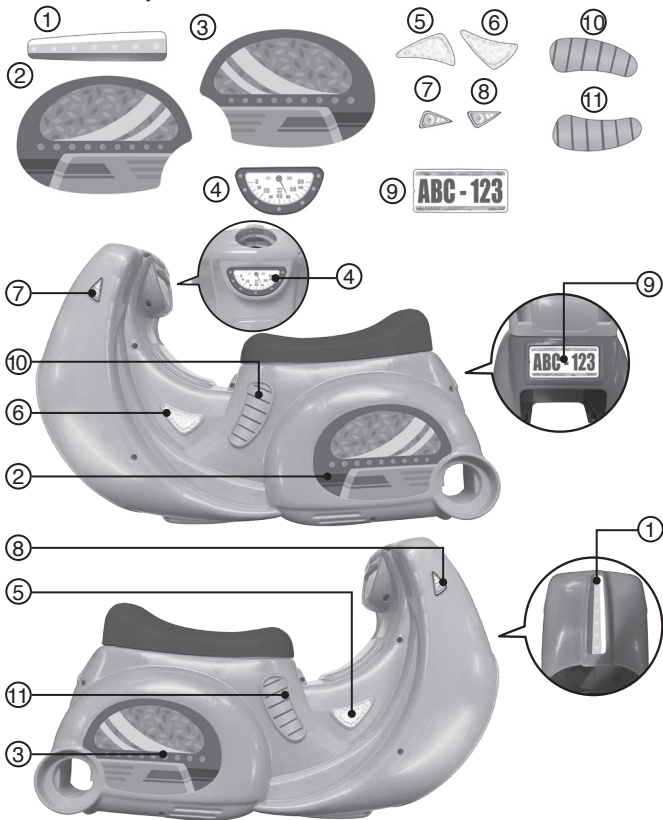
- ① Rotate the packaging locks anticlockwise 90 degrees.
- ② Pull out the packaging locks and discard.

WARNING

Not to be used by children over 36 months. Insufficient strength. 20kg Max. Regularly check for signs of wear or tear on the snap in or locking devices. If damaged do not use until repaired or replaced. Only to be used under the direct supervision of a competent adult.

LABEL APPLICATION

Please securely stick the labels to the scooter as indicated below:



GETTING STARTED

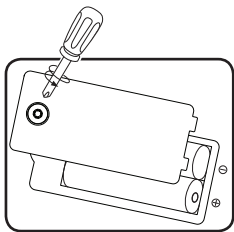
WARNING:

Adult assembly required for battery installation.

Keep batteries out of reach of children.

Battery Removal and Installation

1. Make sure the unit is turned OFF.
2. Locate the battery cover on the back of the unit. Use a screwdriver to loosen the screw and then open the battery cover.
3. If used batteries are present, remove these batteries from the unit by pulling up on one end of each battery.
4. Install 2 new AA (AM-3/LR6) batteries following the diagram inside the battery box. (For best performance, alkaline batteries or fully charged Ni-MH rechargeable batteries are recommended).
5. Replace the battery cover and tighten the screw to secure.



IMPORTANT: BATTERY INFORMATION

- Insert batteries with the correct polarity (+ and -).
- Do not mix old and new batteries.
- Do not mix alkaline, standard (carbon-zinc) or rechargeable batteries.
- Only batteries of the same or equivalent type as recommended are to be used.
- Do not short-circuit the supply terminals.
- Remove batteries during long periods of non-use.
- Remove exhausted batteries from the toy.
- Dispose of batteries safely. Do not dispose of batteries in fire.

RECHARGEABLE BATTERIES:

- Remove rechargeable batteries (if removable) from toy before charging.
- Rechargeable batteries are only to be charged under adult supervision.
- Do not charge non-rechargeable batteries.

Disposal of batteries and product



The crossed-out wheellie bin symbols on products and batteries, or on their respective packaging, indicates they must not be disposed of in domestic waste as they contain substances that can be damaging to the environment and human health.



The chemical symbols Hg, Cd or Pb, where marked, indicate that the battery contains more than the specified value of mercury (Hg), cadmium (Cd) or lead (Pb) set out in the Batteries and Accumulators Regulation.

The solid bar indicates that the product was placed on the market after 13th August, 2005.

Please dispose of your product and batteries responsibly.

In the UK, give this toy a second life by disposing of it at a small electricals collection point* so all of its materials can be recycled.

Learn more at:

www.vtech.co.uk/recycle

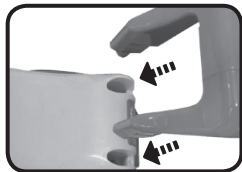
www.vtech.com.au/sustainability

* Visit www.recyclenow.com to see a list of collection points near you.

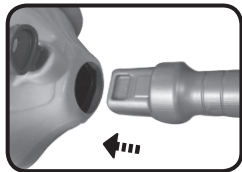
ASSEMBLY INSTRUCTIONS

With the **2-in-1 Ride & Balance Scooter** safety comes first. To ensure your child's safety, adult assembly is required. For your child's safety, do not let your child play with the toy until it is fully assembled.

1. Insert the **Seat Back Handle** into the slots on the back of the **Seat**. Press down on the **Handle** until you hear it snap into place.



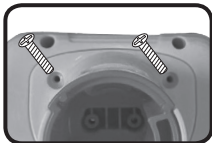
2. Insert the **Handlebars** into either side of the **Driving Panel**. Push until you hear the **Handlebars** snap into place.



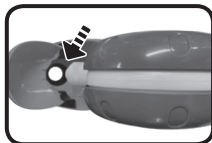
3. Insert the **Front Wheel Cover** into the front of the **Scooter Body**. Press until you hear the **Front Wheel Cover Tabs** snap into place.



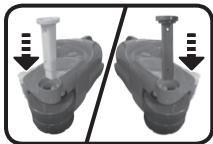
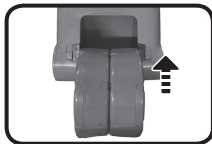
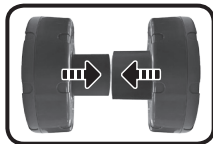
4. Attach the **Driving Panel Support Post** to the bottom of the **Driving Panel**, securing the pieces together with the four **Small Screws**.



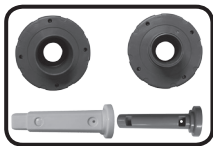
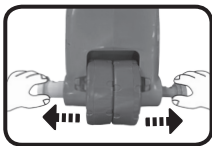
5. Insert the **Front Wheel** into the bottom of the **Scooter Body**. Push until you hear the **Front Wheel** snap into place.



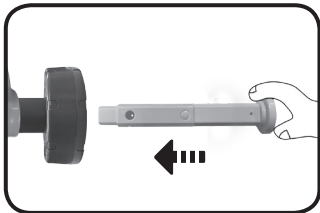
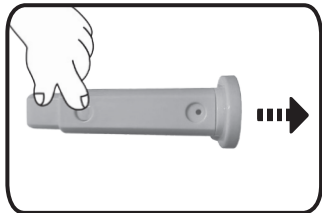
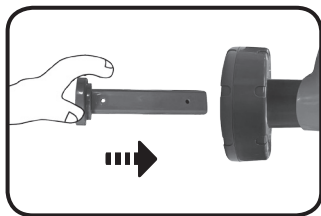
6. To assemble the **Back Wheels** in the **Scooter** position, push the two **Back Wheels** together. Shorten the **Long Axle** by pressing the rounded end toward the squared off end, then place the **Wheels** between the two **Wheel Supports** on the **Scooter**. Slide the **Short Axle** and the **Long Axle** through the corresponding sized holes on the **Scooter** until you hear the two axles snap together. Ensure the wheels are secured properly before using the **Scooter**.



7. To remove the **Back Wheels**, slide and hold the **Wheel Lock** while pulling out the **Small Axel**. Next, slide and hold the **Wheel Lock** and pull out the **Long Axel**, then remove and separate the two **Wheels**.



8. To assemble the **Back Wheels** in the **Tricycle** position, slide the **Short Axel** through the outside of one of the **Wheels**, then through the corresponding hole in one of the **Scooter's Wheel Supports**. Next, press the button on the **Long Axel** and pull to extend the axel. Slide the **Long Axel** through the other **Wheel**. Insert the protruding end of this axel through the hole of the other **Wheel Support**. Push until it slides into the **Short Axel** and you hear the two snap together.



9. Please check the **Wheel Locks** before using the scooter. The **Wheel Locks** will spring into the locked position when the **Wheel Axels** are properly installed.



PRODUCT FEATURES

1. On/Off/Volume Switch

To turn the unit **On**, turn the **On/Off/Volume Switch** to the Low volume (🔊) or High volume (🔊🔊) position. You will hear a sound, a phrase and a song. To turn the unit **Off**, turn the **On/Off/Volume Switch** to the **Off** (●) position.



2. Automatic Shut-Off

To preserve battery life, the **2-in-1 Ride & Balance Scooter** will automatically shut down after approximately 45 seconds without input. The unit can be turned **On** again by pressing any button, twisting the **Ring** or turning the **Map**.

NOTE

If the unit powers down or if the light fades out during play, please install a new set of batteries.

ACTIVITIES

1. Light Up Buttons

Press the **Light Up Buttons** to hear playful music, fun phrases about colours, traffic lights, counting and fun sounds. The lights will flash with the sounds.



2. Rolling Map

Turn the **Rolling Map** to one of the four positions to identify the locations through fun phrases and sounds associated with the locations. The lights will flash with the sounds.



3. Twisting Headlight Ring

Turn the **Twisting Headlight Ring** to hear a variety of fun sounds. The lights will flash with the sounds.



4. Motion Sensor

Roll the **Scooter** to activate the **Motion Sensor** and hear playful driving sounds. The lights will flash with the sounds.



MELODIES

1. Bicycle Built for Two
2. Did You Ever See a Lassie?
3. On Top of Old Smokey
4. Aiken Drum
5. A-Ticket, A-Tasket
6. The Wheels on the Bus
7. Pussy Cat, Pussy Cat
8. Jack Be Nimble
9. London Bridge
10. Boys and Girls Go Out to Play
11. Hey, Diddle Diddle

12. Skip to My Lou
13. Do You Know the Muffin Man?
14. Here We Go Round the Mulberry Bush
15. While Strolling Through the Park
16. The Alphabet Song

SONG LYRICS

Song 1

Are you ready? Are you ready?

Time to ride, time to ride.

Don't forget your helmet, hold on to the handles.

One, two, three, off we go!

Song 2

When we're riding on the road,

The traffic lights tell us what to do.

When the light turns red, it's time to stop.

Song 3

Rollin', rollin' down the road.

We pass the forest and zoom by the beach,

Then drive through the city, on our way home!

CARE & MAINTENANCE

1. Keep the unit clean by wiping it with a slightly damp cloth.
2. Keep the unit out of direct sunlight and away from any direct heat sources.
3. Remove the batteries if the unit will not be in use for an extended period of time.
4. Do not drop the unit on hard surfaces and do not expose the unit to moisture or water.

TROUBLESHOOTING

If for some reason the unit stops working or malfunctions, please follow these steps:

1. Turn the unit **Off**.
2. Interrupt the power supply by removing the batteries.
3. Let the unit stand for a few minutes, then replace the batteries.
4. Turn the unit **On**. The unit should now be ready to use again.
5. If the unit still does not work, install a new set of batteries.

CONSUMER SERVICES

Creating and developing **VTech**[®] products is accompanied by a responsibility that we at **VTech**[®] take very seriously. We make every effort to ensure the accuracy of the information, which forms the value of our products. However, errors sometimes can occur. It is important for you to know that we stand behind our products and encourage you to call our Consumer Services Department with any problems and/or suggestions that you might have. A service representative will be happy to help you.

UK Customers:

Phone: 0330 678 0149 (from UK) or +44 330 678 0149 (outside UK)
Website: www.vtech.co.uk/support

Australian Customers:

Phone: 1800 862 155
Website: support.vtech.com.au

NZ Customers:

Phone: 0800 400 785
Website: support.vtech.com.au

PRODUCT WARRANTY/ CONSUMER GUARANTEES

UK Customers:

Read our complete warranty policy online at vtech.co.uk/warranty.

Australian Customers:

VTECH ELECTRONICS (AUSTRALIA) PTY LIMITED –
CONSUMER GUARANTEES

Under the Australian Consumer Law, a number of consumer guarantees apply to goods and services supplied by VTech Electronics (Australia) Pty Limited. Please refer to vtech.com.au/consumerguarantees for further information.

**Visit our website for more
information about our products,
downloads, resources and more.**

www.vtech.co.uk
www.vtech.com.au

